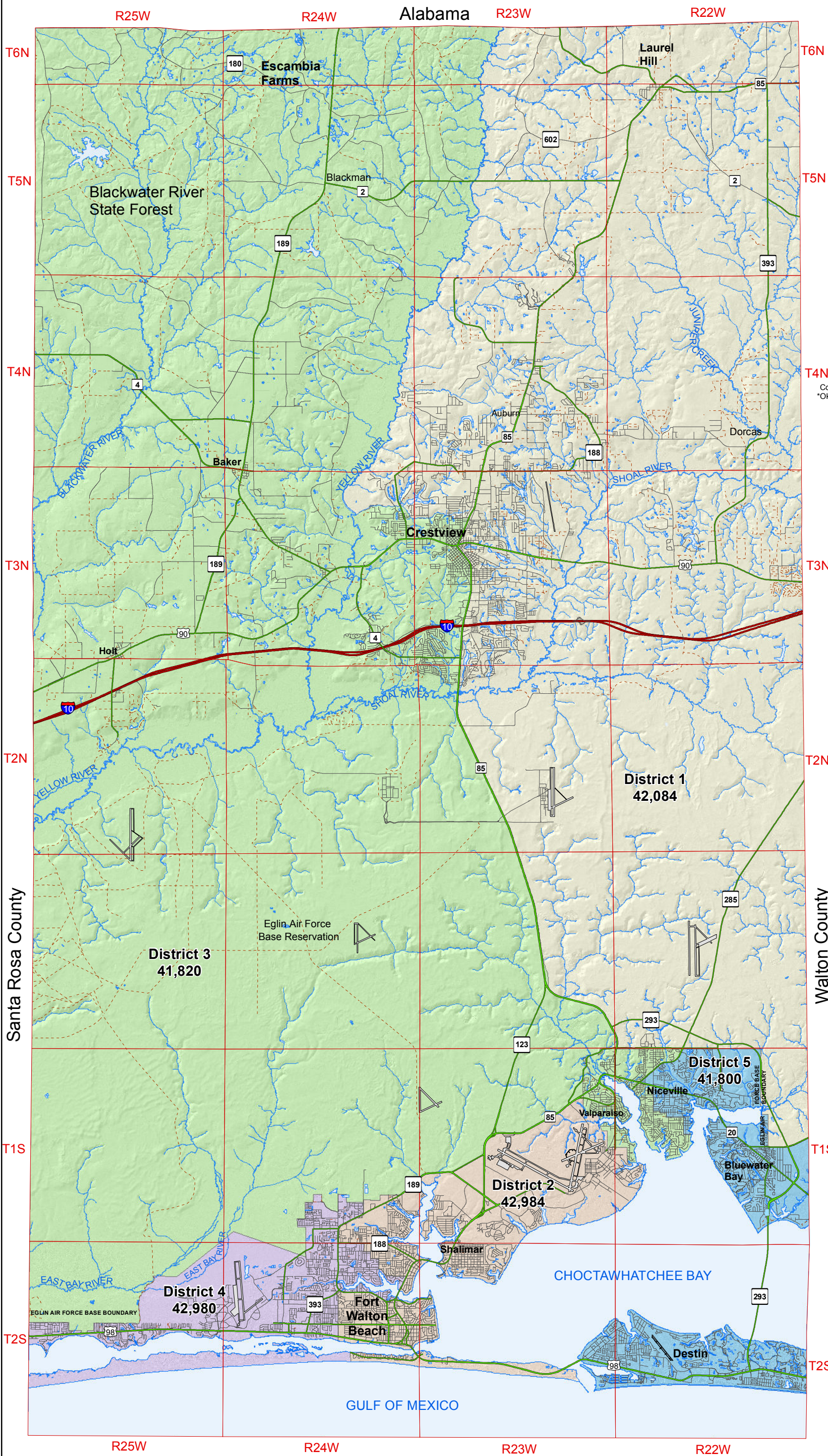


Yellow River Soil & Water Conservation District Subdivision Map

December 2022



- DISTRICT 1: PAUL MIXON (R) 2020-2024
- DISTRICT 2: CAROLYN KETCHEL (R) 2018-2022
- DISTRICT 3: NATHAN BOYLES (R) 2020-2024
- DISTRICT 4: TREY GOODWIN (R) 2018-2022
- DISTRICT 5: MEL PONDER (R) 2020-2024
- TOWNSHIP RANGE LINE
- INTERSTATE
- PRIMARY ROAD
- SECONDARY ROAD
- UNPAVED ROAD

Commissioner District Adopted 12/31/2021
 *Okaloosa County Population 2020: 211,668
 Optimal Value: 42,334
 *Source: United States Census 2020

2020 Population per District

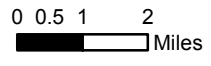
DISTRICT	TOTAL POP
D1	42,084
D2	42,984
D3	41,820
D4	42,980
D5	41,800
Total:	211,668

DISTRICT = Commissioner District
 POP = Population

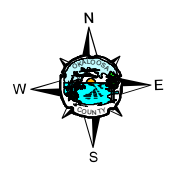
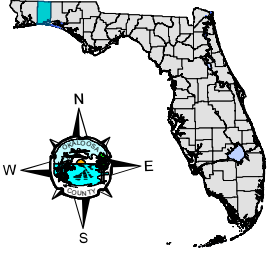
MAP PROJECTION:
 Lambert Conformal Conic Projection
 Stateplane: Florida North (9903)
 NAD 1983(90), NAVD 1988.

PUBLIC RECORD:
 This map was created by Okaloosa County GIS and is in the public domain pursuant to Chapter 119, Florida Statutes.

DISCLAIMER:
 Okaloosa County hereby expressly disclaims any liability for errors or omissions in these maps, indexes or legends. Okaloosa County makes no warranties, expressed or implied, concerning the accuracy, completeness or suitability of this data.



Okaloosa County, FL



Produced by:
 Okaloosa County G.I.S.
 12/30/2021